

abcdefghijklmnop

qrstuvwxyz

Polymode

abcdefghijklmnop

XYZ.

FLEX

*expresses
a view
while remaining
neutral*

IBLE

FRIC

TION

Acting Basic, 72 pt.

PRAGMATISM
Responsibly

Regular

HANDSPRING
Fragments

Semibold

CONCEPTUAL
Quadrupled

Bold

Acting Basic Italic, 72 pt.

ELABORATED
Perspective

Regular

LUMINOSITY
Aeroplanes

Semibold

OUTSTRETCH
Superglued

Bold

Going to Work, 72 pt.

RENEWABLE

Background

Regular

NOISEMAKER

Forthcoming

Semibold

CULTIVATING

Outperform

Bold

Going to Work, 72 pt.

DASHBOARD
Playground

Regular

ERGONOMIC
Justifiable

Semibold

SYSTEMATIC
Quaternary

Bold

Churl Please, 72 pt.

KNOWLEDGE
Beforehand

Regular

WORD & CO.
Ecophysical

Semibold

QUOTABILITY
Gatherings

Bold

Churl Please Italic, 72 pt.

REFLECTIVITY

Bibliografía

Regular

METROPOLIS

Frequently

Semibold

COORDINATE

Kaleidoscope

Bold

Attitude, 72 pt.

SPACECRAFT
Authenticity

Regular

BIODYNAMIC
Expeditious

Semibold

ORCHESTRA
Unwavering

Bold

Attitude Italic, 72 pt.

FREETHINKER
Keyboarder

Regular

WAREHOUSE
Handwriting

Semibold

GLAMORIZED
Preferably

Bold

Opulent, 72 pt.

ATMOSPHERE

Microgravity

Regular

NOURISHING

Festkörpern

Semibold

PATHFINDERS

Overflights

Bold (narrow t)

Opulent Italic, 72 pt.

BOISTEROUS
Questioner

Regular

HYPERFUNKY
Waveforms

Semibold

JEOPARDIZE
Geography

Bold (straight-legged R)

Acting Basic

RuPaul Andre Charles (born November 17, 1960), known mononymously as **RuPaul**, is an American drag queen, television judge, musician, and model. Best known for producing, hosting, and judging the reality competition series *RuPaul's Drag Race*, he has received several accolades, including 11 Primetime Emmy Awards, three GLAAD Media Awards, a Critics' Choice Television Award, two *Billboard Music Awards*, and a Tony Award. Born and raised in San Diego, California, RuPaul later studied performing arts in Atlanta, Georgia. He settled in New

18 pt

At 15, RuPaul and his sister Renetta moved to study performing arts in Atlanta, Georgia. RuPaul struggled as a musician and filmmaker during the 1980s, during which he worked at Atlanta's famed **Plaza Theatre**. In 1982, he debuted on an Atlanta public access variety show called *The American Music Show*, on which he made frequent appearances over the years. He also participated in underground cinema and helped create the low-budget film *Star Booty* and an album by the same name. In Atlanta, RuPaul often performed at the **Celebrity Club**, managed by Larry Tee, as a bar dancer or with his band, Wee Wee Pole. RuPaul also performed as a backup singer to Glen Meadmore along with drag queen Vaginal Davis. RuPaul's first prominent national exposure came in

11 pt

In 1993, RuPaul recorded the house album *Supermodel of the World*. It was released through the rap label Tommy Boy, leading to the dance track hit "Supermodel (You Better Work)". The music video was an unexpected success on MTV channels, as grunge and gangsta rap were popular at the time. The song peaked at 45 on the *Billboard* Hot 100 and charted on the **UK Singles Chart**, peaking on the top 40 at 39. The song found the most success on the *Billboard* Hot Dance Music/Club Play chart, where it peaked at 2. Radio airplay, heavy rotation of the music video on MTV, and TV appearances on popular programs like *The Arsenio Hall Show* popularized the song. His next two singles and music videos were to "My Roots" and "A Shade Shady". Both went

9 pt

Going to Work

Later in 1996 he released his second album, *Foxy Lady*, this time on the L.A.-based **Rhino Records** label. Despite his growing celebrity, he failed to chart on the *Billboard* 200. However, the first single “Snapshot” found success in the dance market and went to number four on the Hot Dance Music/Club Play chart. It also enjoyed limited mainstream success, charting at 95 on the *Billboard* Hot 100, which was his second and only other Hot 100 entry to date. The second single “A Little Bit of Love” only charted at 28 on the Hot Dance Music/Club Play

18 pt

In 1997, he released his third album, a Christmas album entitled *Ho Ho Ho*. He had guest appearances in many films, including both *Brady Bunch* movies, in which he played Jan’s female guidance counselor. In 1997, RuPaul teamed with **Martha Wash** to remake the classic disco anthem, “It’s Raining Men”. The song was included on the 1998 compilation CD *RuPaul’s Go Go Box Classics*, which was a collection of his favorite dance songs by other artists. This would be his third and final release through Rhino Records and a major record label. During this time he appeared in Webex TV commercials and magazine ads. In 2002, he recorded with **Brigitte Nielsen**, credited as **Gitta**, the Eurodance track “You’re No Lady”. In 2004, RuPaul released his 4th

11 pt

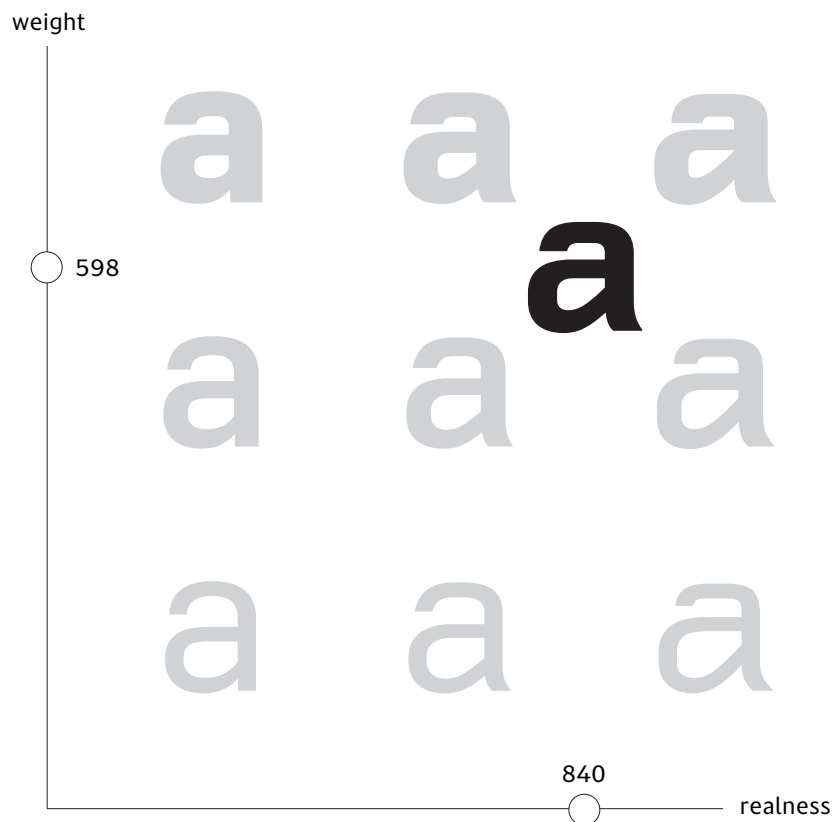
RuPaul’s Drag Race is an American reality competition TV series, the first in the *Drag Race* franchise, produced by World of Wonder for Logo TV, WOW Presents Plus, and, beginning with the ninth season, VH1. The show documents RuPaul in the search for “America’s next drag superstar.” RuPaul plays the role of host, mentor, and head judge for this series, as contestants are given different challenges each week. *RuPaul’s Drag Race* employs a panel of judges, including **RuPaul**, **Michelle Visage**, an alternating third main judge of either **Carson Kressley** or **Ross Matthews**, and a host of other guest judges, who critique contestants’ progress throughout the competition. The title of the show is a play on drag queen and drag racing, and the

9 pt

Polymode Variable

Weight & Realness

Polymode has two separate variable font files, one for Romans and one for Italics. Each file includes the full range of weight and Realness styles, allowing you to fine tune how heavy and expressive, or light and neutral, you want your design to be.

**Using variable fonts in desktop apps**

The variable fonts and static fonts can be installed side-by-side. Adobe CC apps will allow you to select arbitrary styles with sliders. But due to uneven application support of variable fonts, we recommend converting text to outlines or swapping in the static OTFs for the final document version. This ensures that text in exported formats appears as intended.

final

↓

final

Roman Realness range

0
Acting Basic
Neutral appearance
and regular rhythm;
for text to display use

Estuary

250
Going to Work

Estuary

500
Churl Please

Estuary

750
Attitude

Estuary

1000
Opulence
Expressive variation in
width, waist-height,
angularity, curvature;
for display use

Estuary

Italic Realness range

0

Acting Basic

Neutral appearance
and regular rhythm;
for text to display use

Estuary

250

Going to Work

Estuary

500

Churl Please

Estuary

750

Attitude

Estuary

1000

Opulence

Expressive variation in
width, waist-height,
angularity, curvature;
for display use

Estuary

30 static styles

Acting Basic Regular

Acting Basic Semibold

Acting Basic Bold

Acting Basic Italic

Acting Basic Semibold Italic

Acting Basic Bold Italic

Going to Work Regular

Going to Work Semibold

Going to Work Bold

Going to Work Italic

Going to Work Semibold Italic

Going to Work Bold Italic

Churl Please Regular

Churl Please Semibold

Churl Please Bold

Churl Please Italic

Churl Please Semibold Italic

Churl Please Bold Italic

Attitude Regular

Attitude Semibold

Attitude Bold

Attitude Italic

Attitude Semibold Italic

Attitude Bold Italic

Opulence Regular

Opulence Semibold

Opulence Bold

Opulence Italic

Opulence Semibold Italic

Opulence Bold Italic

OpenType features **OFF**

\$30,496.72

\$11,541.38

Proportional tabular figures (default)

OpenType features **ON**

\$30,496.72

\$11,541.38

Proportional old-style figures

1/2 3/16 24/7 99/100

½ ⅜ ⅔ ⁹⁹/₁₀₀

Fractions

mx3+b=y10

mx³+b=y¹⁰

Superscripts

C2H3Cl

C₂H₃Cl

Subscripts

fb fh fi fj fk fl

fb fh fi fj fk fl

Ligatures

energy

energy

Contextual alternates

Default styles

Reading

Complex a (SS02) + curved-leg R

OpenType stylistic set options

a → a

Reading

Simple a (SS01)

R → R

Reading

Straight-legged R (SS03)

justly

Wide t + wide descenders

t → t

justly

Narrow t (SS05)

jy → jy

justly

Narrow descenders (SS06)

2019 2019

2019 2019

Seriffed numeral 1 (SS04)

8 16 32

8 16 32

Solid circled numbers (SS10)

**Designers**

Ben Kiel, Jesse Ragan

Creative muses

Silas Munro & Brian Johnson of Polymode

Release

Available while in progress

The name “Polymode” is a trademark of Polymode.

About Polymode

Polymode is a typeface that expresses a point of view while remaining neutral and balancing functionality with personality. Beyond its buttoned-up first impression, some unexpected charisma demands closer attention, such as the flat horizontal strokes of **g**, **s**, and **y**; the hook-arched **r**; and the non-aligned crossbars of **f** and **t**.

Polymode was built to take full advantage of variable font features with an invented Realness axis on which the characters get progressively more expressive and harder to ignore. Polymode studio, who originally commissioned the typeface, provided names and descriptions for five stations along that axis:

- **Acting Basic** is neutral, mathematical, and accessible.
- **Going to Work** is on point; ready for the day with a little flair.
- **Churl Please** is a whisper between friends when it's just right
- **Attitude** is ovah your shit, sassy, and ready to bring it to you
- **Opulence** is extra, beyond, and you own everything!

Polymode is in active development. Future updates will include lighter weights, overall refinement, enhanced opulence.

If the typeface is currently missing something you need, please contact us. We may already have in the works, or we may be able to fast-track it for you.